

# Career Success Report

2018-19 ACADEMIC YEAR

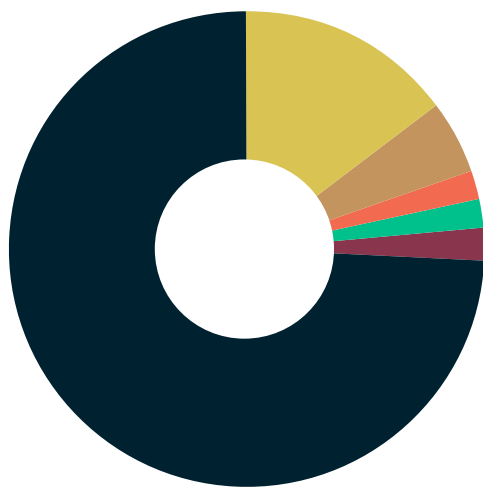


WILLIAM & MARY  
COHEN CAREER CENTER

## Next Destination Report

Class of 2018 Undergraduates

89% of the class of 2018 survey respondents reported they are employed full time or attending graduate school within 6 months of graduation.



74%  
EMPLOYED FULL-TIME

5%  
JOB SEEKING

2%  
PURSUING GRAD SCHOOL

2%  
WORKING PART-TIME

15%  
ATTENDING GRAD SCHOOL

2%  
OTHER  
(Neither job seeking, going to grad school, nor working)

#9

**BEST CAREER SERVICES**  
by Princeton Review

#6

**BEST SCHOOLS FOR INTERNSHIPS**  
by Princeton Review

n=1,558 (surveyed and knowledge rate of 72%, national average of 65%)

The Cohen Career Center's data collection for student career outcomes, reflected in this report, adheres to the standards and guiding principles established by the National Association of Colleges and Employers.

Franek, R., & The Princeton Review (2019). The Best 385 Colleges (2020 Edition). New York: Penguin Random House.

91% of those working reported their career interests aligns very well/somewhat well with their work. 42% of respondents reported participating in at least one internship, externship or research project. 327 graduates responded to this question.



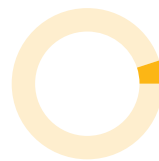
91%  
VERY WELL/  
SOMEWHAT WELL



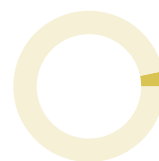
53%  
VERY WELL



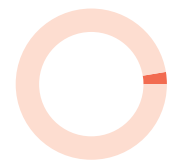
38%  
SOMEWHAT WELL



4%  
NOT VERY WELL



3%  
I DON'T KNOW MY  
CAREER GOALS



2%  
NOT AT ALL

## Top Industries

### Accounting

\$60,500

AVERAGE INCOME



### Banking

\$77,571

AVERAGE INCOME



### Biomedical

\$52,466

AVERAGE INCOME



### Communications

\$29,253

AVERAGE INCOME



### Consulting

\$65,914

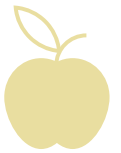
AVERAGE INCOME



### Education

\$32,176

AVERAGE INCOME



### Financial Services

\$58,017

AVERAGE INCOME



### Government/Public Administration

\$47,344

AVERAGE INCOME



### Health Care

\$39,820

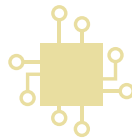
AVERAGE INCOME



### High Tech/Information Technology

\$70,772

AVERAGE INCOME



### Law

\$41,638

AVERAGE INCOME



### Military & Defense

\$55,300

AVERAGE INCOME



### Non-Profit

\$31,858

AVERAGE INCOME



## Top Employers

Employers who hired 4 or more 2018 undergraduates

Survey respondents report being hired by 418 unique employers



Booz | Allen | Hamilton



CGI



Deloitte.



Grant Thornton



JPMORGAN CHASE & CO.



Smithfield



United States Armed Forces

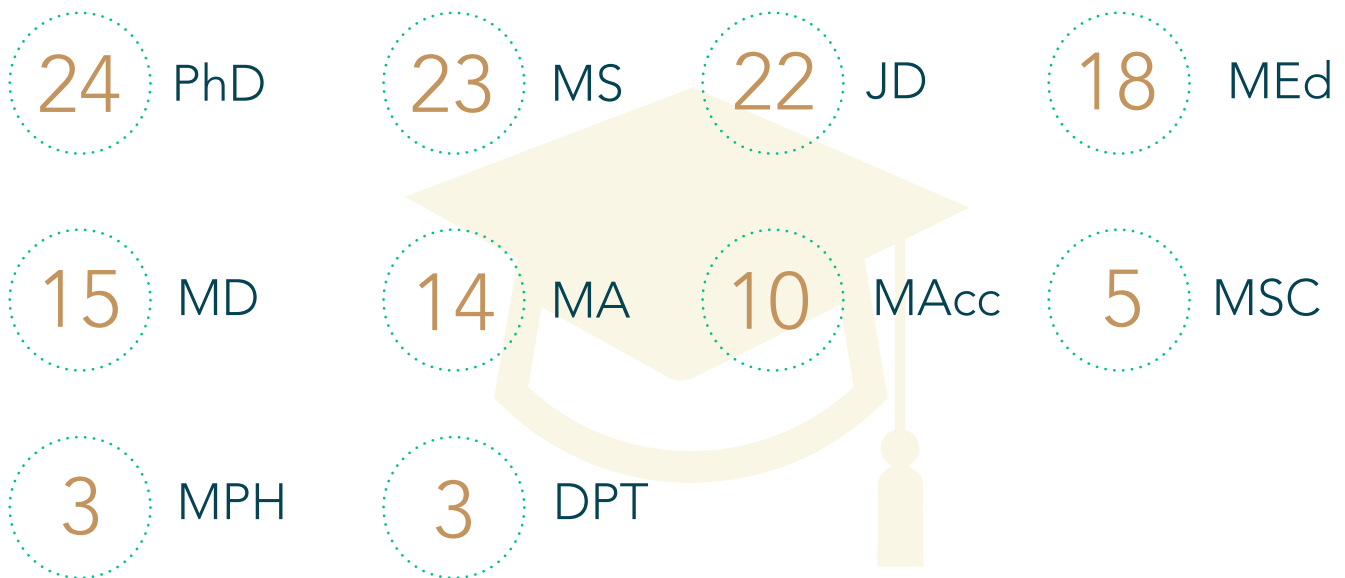
# Graduate School Enrollment

15% of the undergraduate class of 2018 matriculated to graduate school attending 107 distinct graduate programs as degree-seeking students.

The most represented schools are:

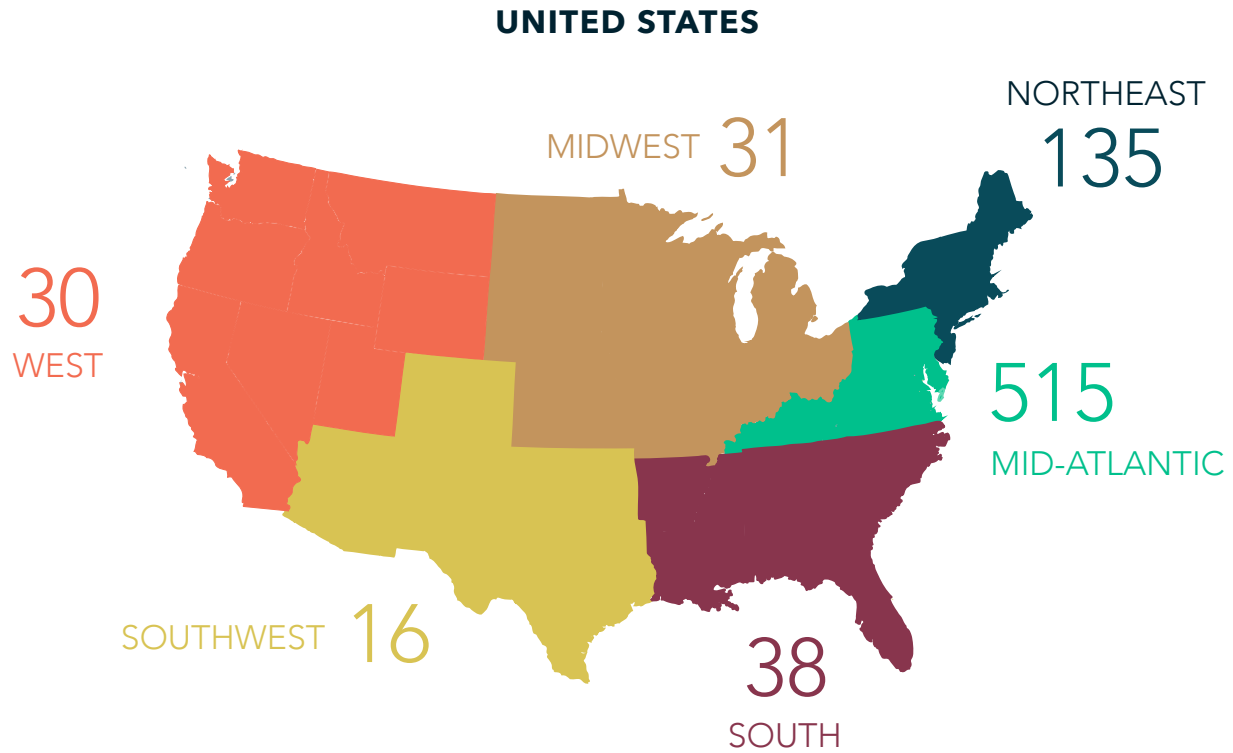


Students enrolled in a wide variety of programs, including (but not limited to): Medicine, Accounting, Psychology, Public Policy, Education, Law, Government, Counseling, Physics, Engineering, and Public Health. Respondents are pursuing 25 different graduate degree types, including the following:



# First Destination Geographic Distribution

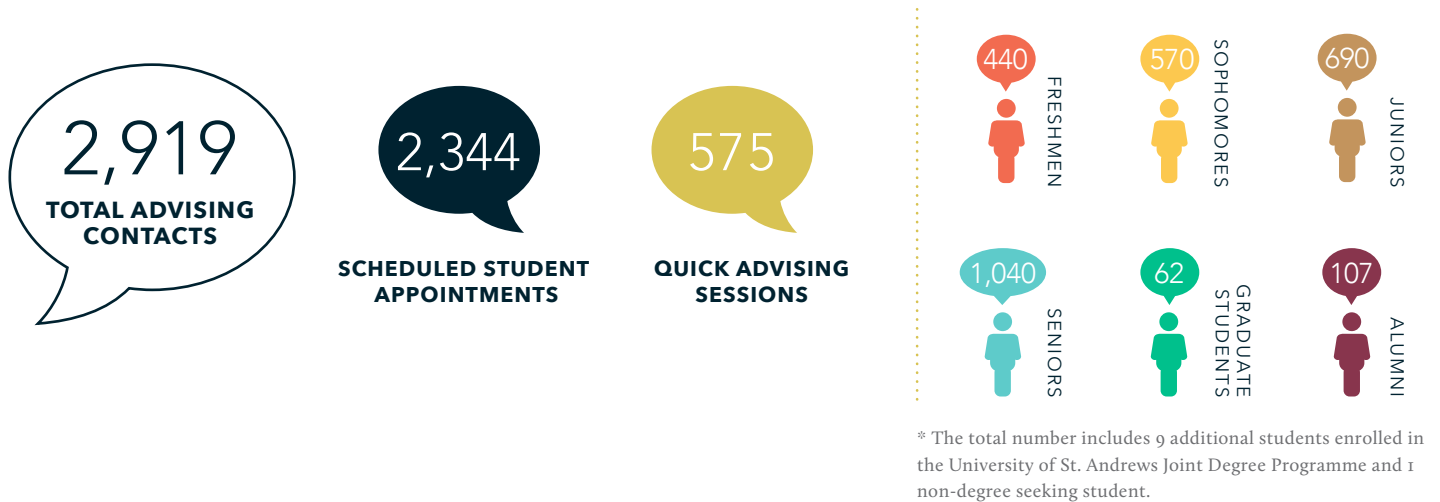
\* Derived from respondents who provided their geographic location for employment and graduate school



# Student Engagement

The Cohen Career Center conducted 2,919 individual advising sessions in the 2018-19 academic year, including scheduled appointments and quick advising.

One of the keys to successful career planning is an early start. The Cohen Career Center assists students with programs and opportunities open to all class years, majors, and areas of interest. The graphic below illustrates the number of advising contacts (by academic class year) held through the Cohen Career Center during the 2018-19 academic year.



## FUSE (Funding for Unpaid Summer Experience)

Students were funded for participation in unpaid summer internships, allowing them to gain valuable skills and work experience in a variety of industries.



## Externship Program

79 students participated in this program which allowed them to shadow professionals and gain exposure to industries of interest. 23 sites participated, offering 25 externship opportunities.



---

## *My Active Career Exploration (MACE)*

MACE is a 6-week career readiness series led by the Cohen Career Center and offered to first and second year students. This series examines a number of career readiness topics and gets students in the habit of networking and developing career relationships.



**59**  
**MACE STUDENT PARTICIPATION**

---

## *Design Your Next Step*

Design Your Next Step is a 7-week series led by the Cohen Career Center and offered to sophomores, juniors, and seniors. This series utilizes design thinking as a tool for career development and planning.



**13**  
**PARTICIPANTS**

---

## *Mock Interviews*

Students participate in “mock” interviews with advisors, employers, or industry volunteers including parents, alumni, and community partners.



**245**  
**MOCK INTERVIEWS**

---

## *Workshops*

Workshops are hosted by the Cohen Career Center and are designed to teach students about relevant career development topics including resumes, cover letters, job searching, interviewing, networking, and more.

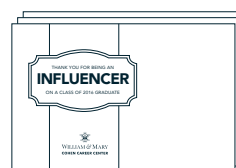


**2,625**  
**STUDENT ATTENDEES**  
**143**  
**WORKSHOPS**

---

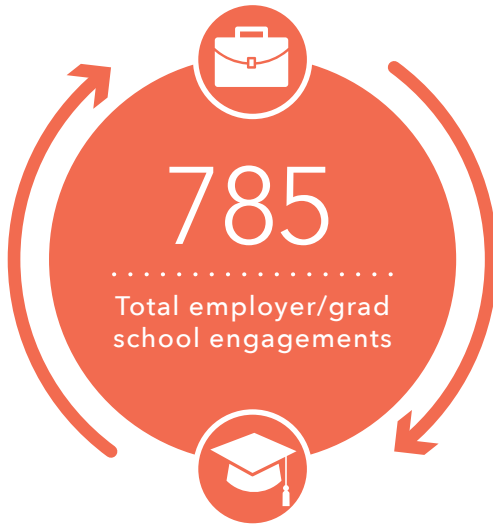
## *Influencer Postcards*

All faculty and staff on campus play a major role in supporting students’ career success. Members of the class of 2018 identified 403 different W&M faculty and staff members as being “Most influential to their William & Mary education.” Each year the Cohen Career Center recognizes these individuals with a postcard highlighting this distinction, celebrating the partnership for the career success of our students!



**403**  
**POSTCARDS SENT TO FACULTY & STAFF**

# Recruiting Engagement



\*Numbers represent all touchpoints between recruiters and students, not unique values. Total includes fairs, information sessions, interview days, OCR employers, externship sites, and employer mock interviews.

## Annual Recruitment Events

### INFORMATION SESSIONS

1,401 students | 127 sessions

### FALL DIVERSITY BRUNCH 2018

106 students | 19 employers

### GRADUATE & PROFESSIONAL SCHOOL FAIR 2018

148 students | 79 programs

### NEW YORK RECRUITING CONSORTIUM 2019

4 students | 22 employers

### FALL RECRUITING CONSORTIUM 2018

11 students | 16 employers

### K12 EDUCATION INTERVIEW DAY 2019

67 students | 42 employers

### NONPROFIT, GOVERNMENT & EDUCATION CAREER FAIR

38 students | 105 employers

## CAREER FAIRS

FALL 2018

998 students | 85 employers

SPRING 2019

578 students | 67 employers

# On-Campus Recruiting

Every semester employers come to campus to interview W&M students for jobs and internships. All majors are recruited and a variety of employers are represented.



**ON-CAMPUS  
RECRUITING SCHEDULES** 105

**INTERVIEWS  
CONDUCTED** 977



## TribeCareers

TribeCareers is the hub for job and internship postings for William & Mary students. Our Employer Development team works hard to introduce students to a wide variety of opportunities throughout the Commonwealth of Virginia, the nation, and the world.

886

**EMPLOYERS**

2720

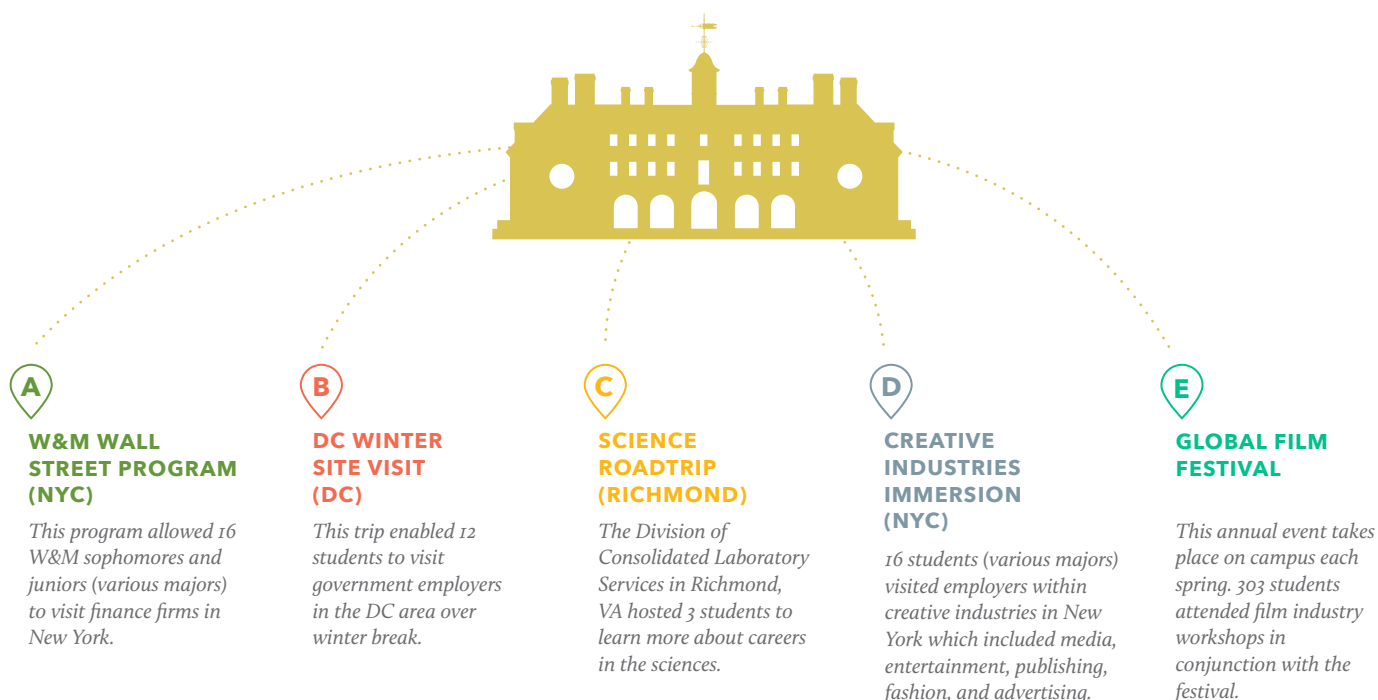
**JOB POSTINGS**

8506

**STUDENT  
APPLICATIONS**

## Cohen Off-Campus

Each year the Cohen Career Center hosts a number of trips where students from any academic background can attend site visits and gain in-depth industry exposure.



**COHEN CAREER CENTER**

William & Mary Cohen Career Center  
P.O. Box 8795  
Williamsburg, VA 23187-8795

[www.wm.edu/offices/career](http://www.wm.edu/offices/career)  
757-221-3231

facebook: /WMCareerCenter  
Twitter: @wmcareer  
Instagram: @cohencareercenter