

Career Success Report

2019-20 ACADEMIC YEAR

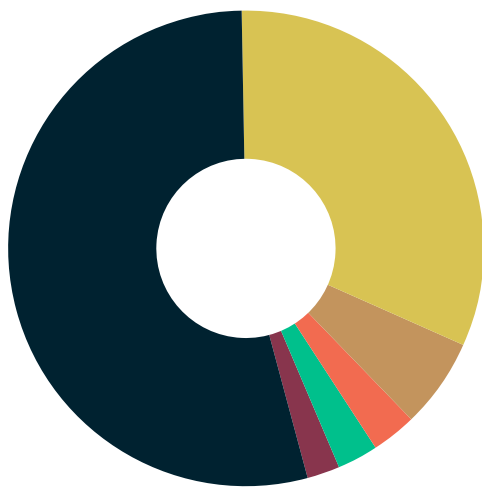


WILLIAM & MARY
COHEN CAREER CENTER

Next Destination Report

Class of 2019 Undergraduates

89% of the Class of 2019 reported positive career outcomes – employed full time, part time, or attending graduate/professional school within 6 months of graduation – as compared to the national average of 86%.



54%
EMPLOYED FULL-TIME

6%
JOB SEEKING

3%
PURSUING GRADUATE/
PROFESSIONAL SCHOOL

3%
WORKING PART-TIME

32%
ATTENDING GRADUATE/
PROFESSIONAL SCHOOL

2%
OTHER
(Neither job seeking, going
to grad school, nor working)

TOP 15
BEST CAREER
SERVICES
by Princeton Review

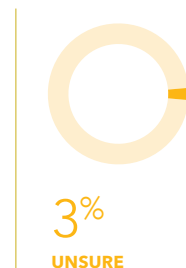
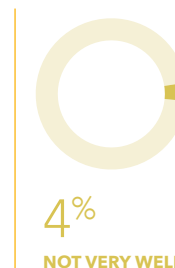
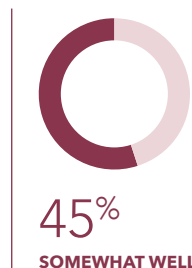
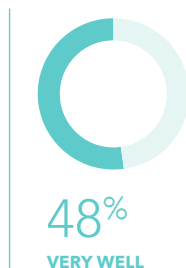
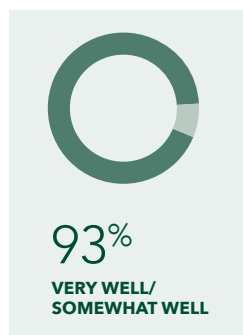
TOP 20
BEST SCHOOLS
FOR INTERNSHIPS
by Princeton Review

n=1,648 (surveyed and knowledge rate of 68%. National average is 65% – NACE, 2019)

The Cohen Career Center's data collection for student career outcomes, reflected in this report, adheres to the standards and guiding principles established by the National Association of Colleges and Employers.

Franek, R., & The Princeton Review (2019). The Best 385 Colleges (2020 Edition). New York: Penguin Random House.

93% of those employed reported their career interests align very well/somewhat well with their work.



Average Salaries

* To learn more about salaries based on occupational field and geographic location, visit the Occupational Outlook Handbook published by the Bureau of Labor Statistics at <https://www.bls.gov/ooh/>.

\$59,289

OVERALL MEAN SALARY
National Mean Salary: \$54,488

\$67,280

MEAN SALARY FOR BBA STUDENTS

\$55,935

MEAN SALARY FOR ARTS & SCIENCES STUDENTS

INDUSTRIES

\$64,767

BUSINESS CAREERS

\$48,000

CREATIVE CAREERS

\$54,586

PUBLIC SERVICE CAREERS

\$40,154

EDUCATION CAREERS

\$59,180

STEM CAREERS

Top Employers

The Class of 2019 reported 433 unique employers. Below are employers who hired 4 or more members.

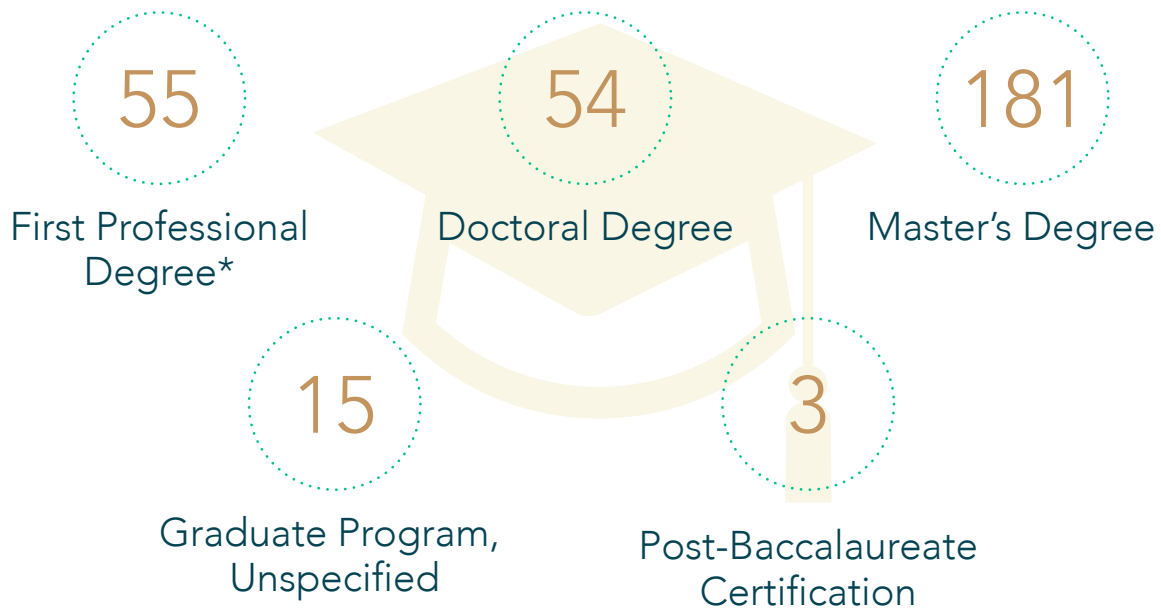


Top Graduate/Professional Schools

32% of the undergraduate Class of 2019 matriculated to 111 distinct graduate/professional programs. Those enrolling 4 or more students:



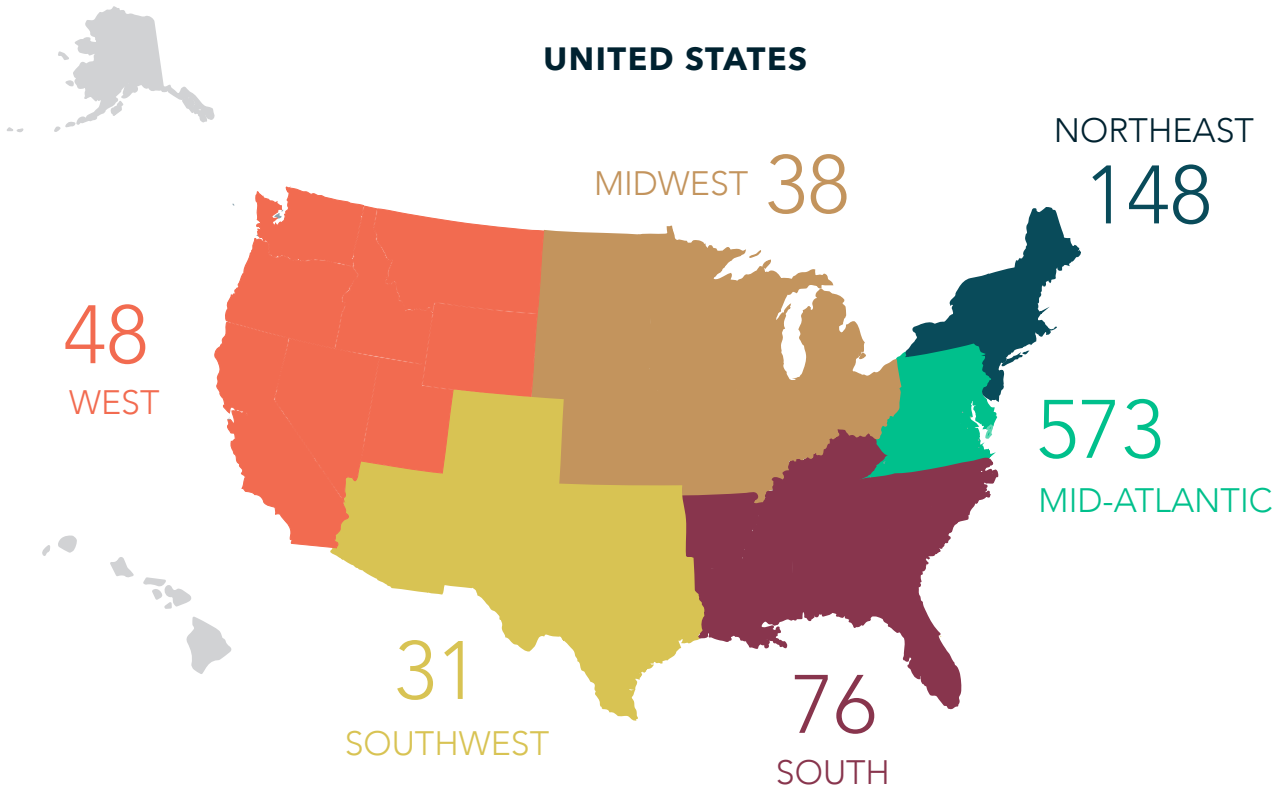
According to the National Student Clearinghouse and the W&M Next Destination Survey, the following advanced degrees and certifications are sought by the Class of 2019, of which 111 unique graduate or professional programs are reported.



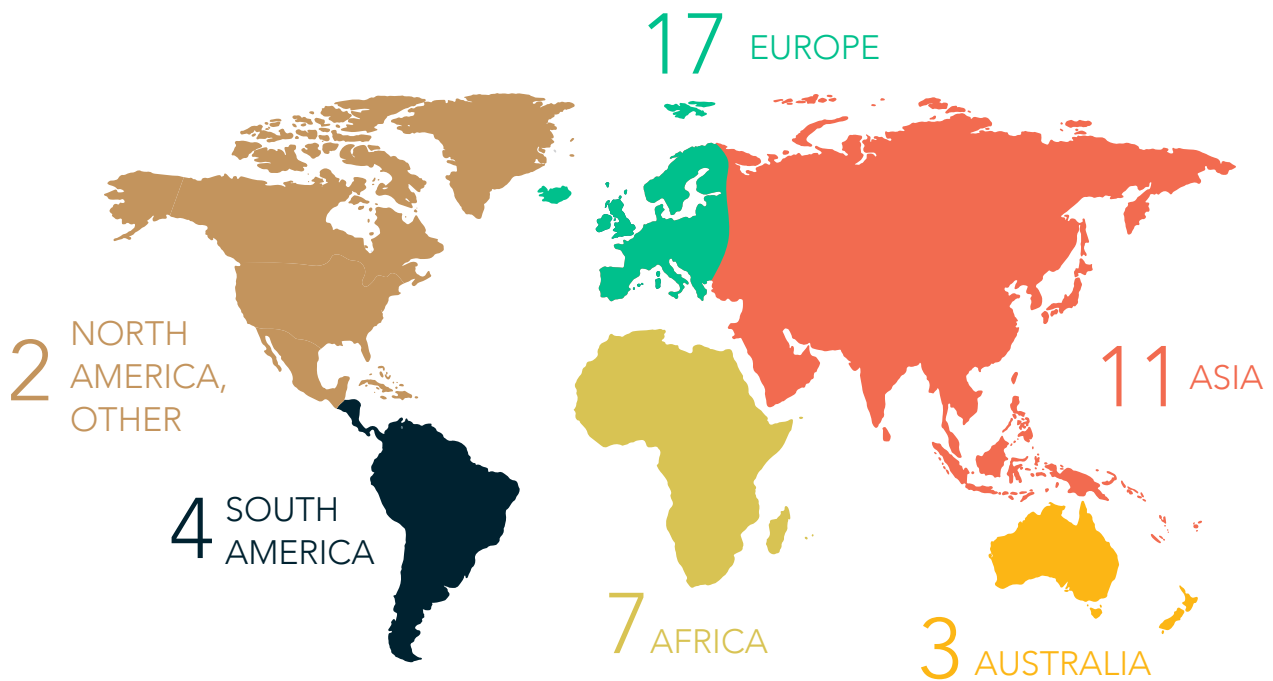
* Includes law and medicine

First Destination Geographic Distribution

* Derived from respondents who provided their geographic location for employment and graduate/professional school



INTERNATIONAL



Student Engagement

One of the keys to successful career planning is an early start. The Cohen Career Center delivers programs and opportunities open to all class years, majors, and areas of interest. The graphic below illustrates the number of advising contacts from July 1, 2019 to June 30, 2020. (NOTE: In March 2020, due to the global pandemic, many services and programs shifted to virtual delivery. Use of Zoom, phone, and email increased for individual career advising appointments.)



Funding for Unpaid Summer Experience (F.U.S.E.)*

5 students were funded for participation in unpaid summer internships, allowing them to gain valuable skills and work experience in a variety of industries. (Please note, F.U.S.E. is not intended to make up for lost wages, but to allow greater access to experiential learning.)



STUDENTS FUNDED 5

AWARDED MORE THAN \$3,500



*Student needs were greatly reduced due to sites shifting to virtual internships (COVID-19)

Externship Program

83 students participated in our externship program which allowed them to shadow professionals and gain exposure to industries of interest at 111 unique sites.



STUDENTS PARTICIPATED 83

SITES PARTICIPATED 111



Mock Interviews

160 unique students participated in practice interviews with career advisors, employers, alumni, and industry volunteers which included parents and community partners.

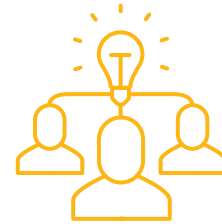


160
MOCK
INTERVIEWS

Programs

Programs are hosted year round by the Cohen Career Center and are designed to teach students about relevant topics such as resumes, cover letters, the job search, interviews, networking, and more.

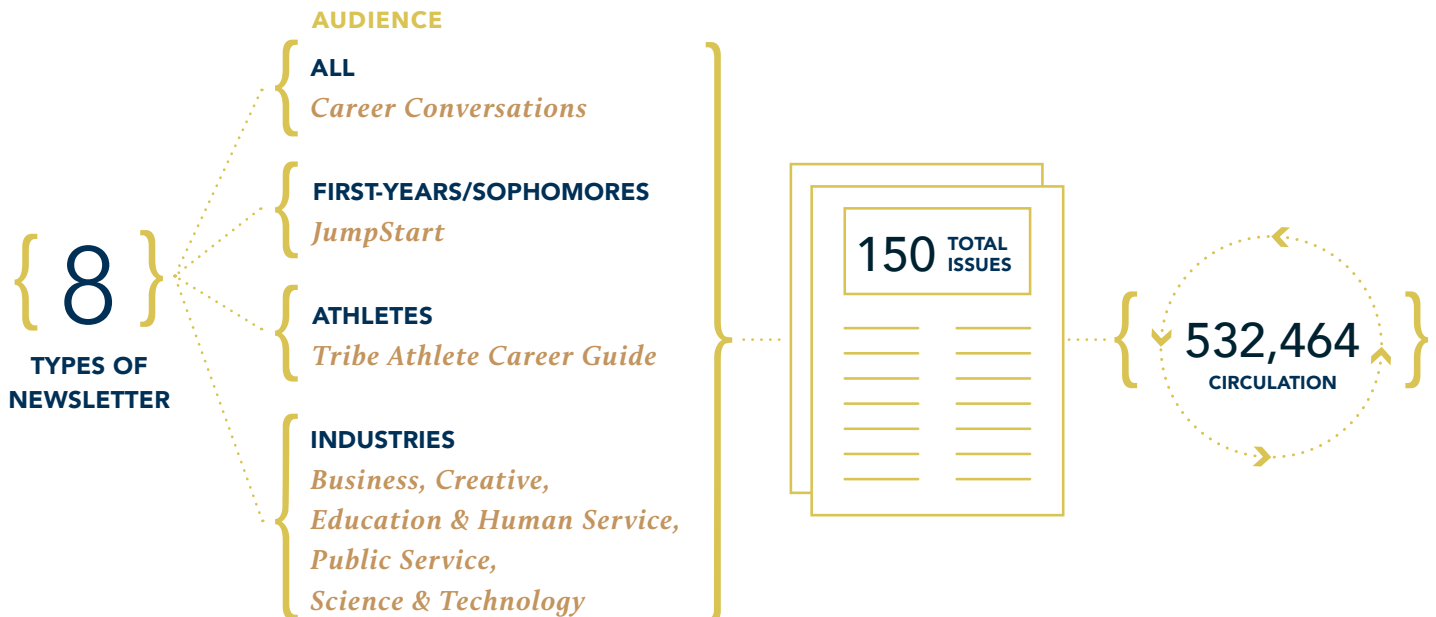
Programs include workshops, meet ups, crash courses, roundtable discussions, themed series, chats/talks, panels, virtual visits, seminars, and presentations.



8,190
STUDENT ATTENDEES

252
PROGRAMS

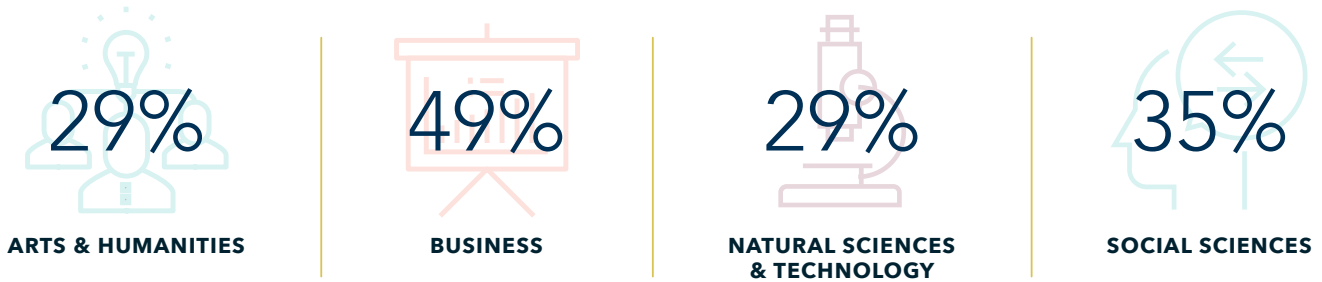
Cohen-Produced Newsletters



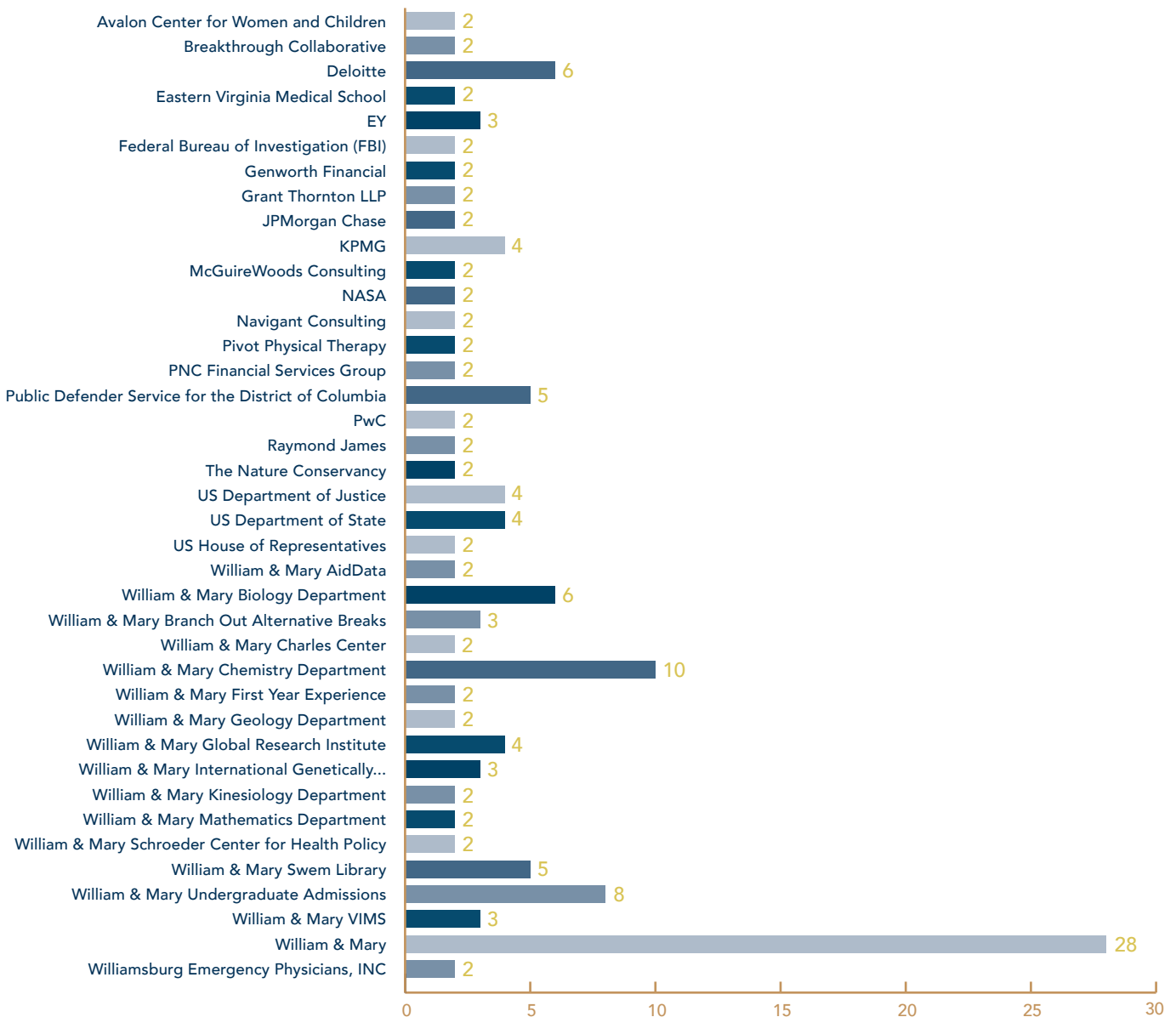
Students may subscribe and have access to all newsletters regardless of major, class year, or interest.

Experiential Learning

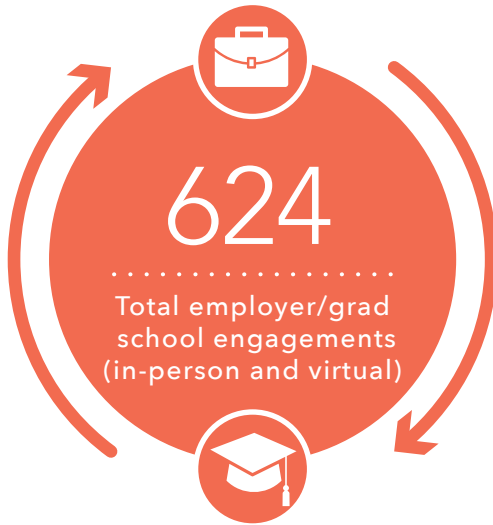
Experiential Learning by Academic Cluster



In the Next Destination Survey, experiential learning was defined as applied research, internships, externships, field experience, and student employment in order to capture the most meaningful experiences reported by the Class of 2019. Below are those sites with 2 or more responses from this cohort.

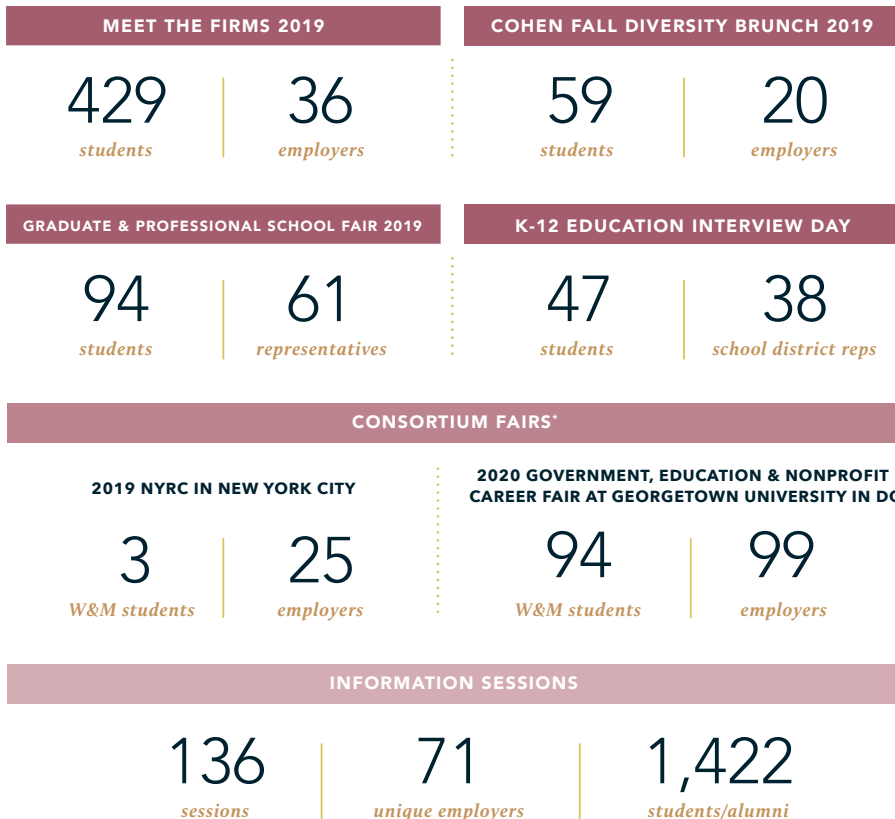


Recruiting Engagement



*Numbers represent all touchpoints between recruiters and students, not unique values. Total includes fairs, information sessions, interview days, OCR employers, externship sites, and employer mock interviews.

Annual Recruitment Events



* Consortium fairs required students to travel

On-Campus Recruitment (OCR)

Each fall and spring, employers set up campus interviews with W&M students for jobs and internships. All majors are recruited for a variety of industries.



**ON-CAMPUS
RECRUITING SCHEDULES** 139

**INTERVIEWS
CONDUCTED** 739



TribeCareers

TribeCareers is the hub for William & Mary students seeking opportunities. Our Employer Engagement team introduces our students to a wide variety of jobs, internships, fellowships, and other career experiences available throughout the Commonwealth, the nation, and the world.

7202

EMPLOYERS

10372

TOTAL POSTINGS*

4845

**STUDENT
APPLICATIONS**

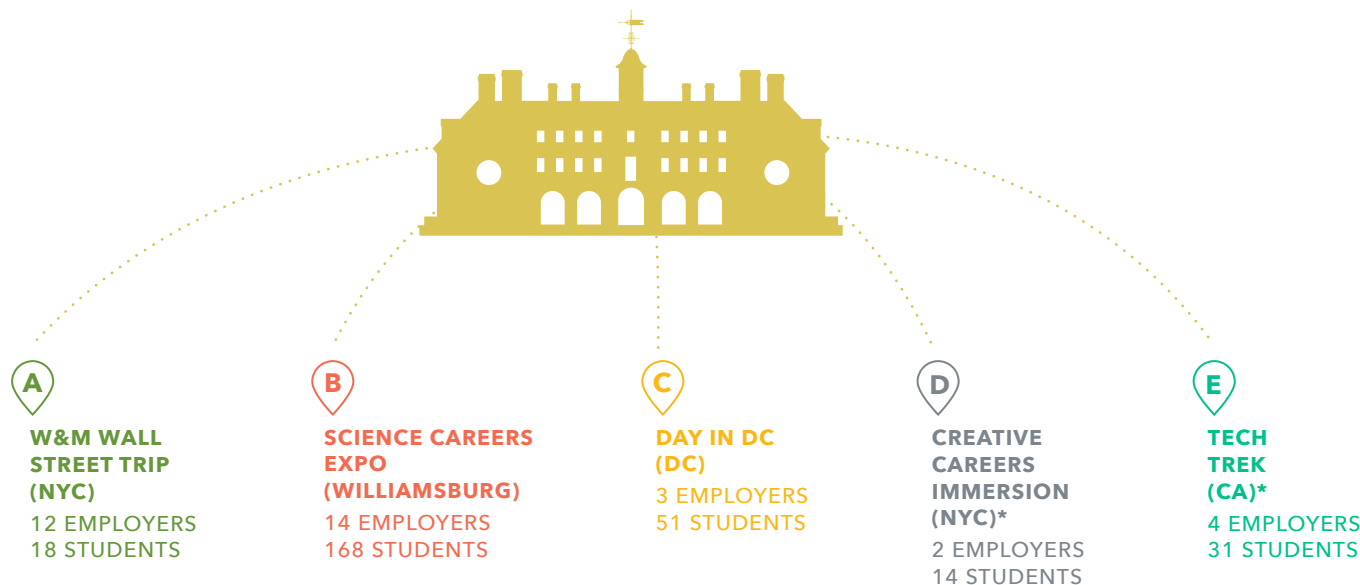
5013

**INTERSHIP
POSTINGS**

*Represents full-time jobs, fellowships, internships, externships, part-time jobs and other related career opportunities

Signature Events

Each year the Cohen Career Center hosts a number of trips where students from any academic background can attend site visits and gain in-depth industry exposure.



*Moved Creative Careers Immersion and Tech Trek to virtual format due to global pandemic

COHEN CAREER CENTER

William & Mary Cohen Career Center
P.O. Box 8795
Williamsburg, VA 23187-8795

[https://www.wm.edu/offices/
career/index.php](https://www.wm.edu/offices/career/index.php)
757-221-3231

facebook: /WMCareerCenter
Twitter: @wmcareer
Instagram: @cohencareercenter