

Career Success Report

2020-21 ACADEMIC YEAR

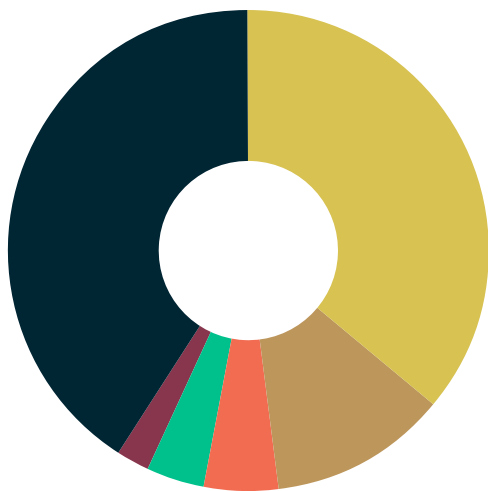


WILLIAM & MARY
COHEN CAREER CENTER

Next Destination Report

Class of 2020 Undergraduates

83% of the Class of 2020 reported positive career outcomes – employed or attending graduate/professional school – within 6 months of graduation. Knowledge rate for the Class of 2020 is 79% compared to the national average, which is 65%. (NACE, 2019)



41%
EMPLOYED FULL TIME

12%
JOB SEEKING

4%
APPLYING TO GRADUATE/
PROFESSIONAL SCHOOL

5%
EMPLOYED PART TIME

36%
ATTENDING GRADUATE/
PROFESSIONAL SCHOOL

2%
OTHER
(Neither job seeking, going
to grad school, nor working)

#1

**BEST PUBLIC
SCHOOLS FOR
INTERNSHIPS**
by Princeton Review

#14

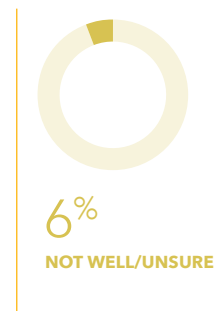
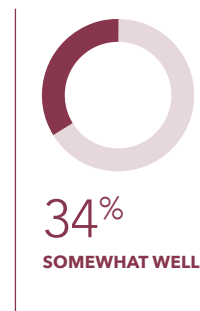
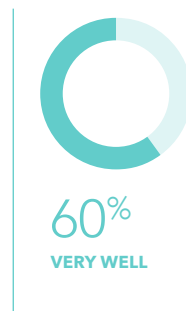
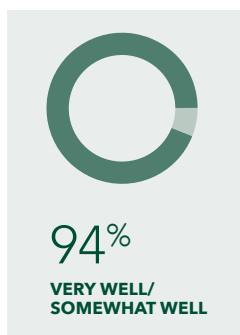
**BEST PUBLIC
CAREER SERVICES**
by Princeton Review

N=1,652 surveyed. (Knowledge rate: 79%. National average is 65% – NACE, 2019.)

The Cohen Career Center's data collection for student career outcomes, reflected in this report, adheres to the standards and guiding principles established by the National Association of Colleges and Employers.

Franek, R., & The Princeton Review (2019). The Best 385 Colleges (2020 Edition). New York: Penguin Random House.

94% of those employed reported their career interests align very well/somewhat well with their work.



Average Salaries

Reported by W&M Class of 2020

* To learn more about salaries based on occupational field and geographic location, visit the Occupational Outlook Handbook published by the Bureau of Labor Statistics at <https://www.bls.gov/oooh/>.

\$66,626

OVERALL FT MEAN SALARY

National Mean Salary: \$55,260

(NACE Salary Survey, Summer 2021)

\$69,671

MEAN FT SALARY FOR BBA

\$70,774

MEAN FT SALARY FOR ARTS & SCIENCES

INDUSTRIES

\$74,200

BUSINESS CAREERS

\$58,200

CREATIVE CAREERS

\$88,153

PUBLIC SERVICE CAREERS

\$36,564

EDUCATION CAREERS

\$55,310

STEM CAREERS

Top Employers

The Class of 2020 reported 371 unique employers. Below are employers who hired 4 or more members:

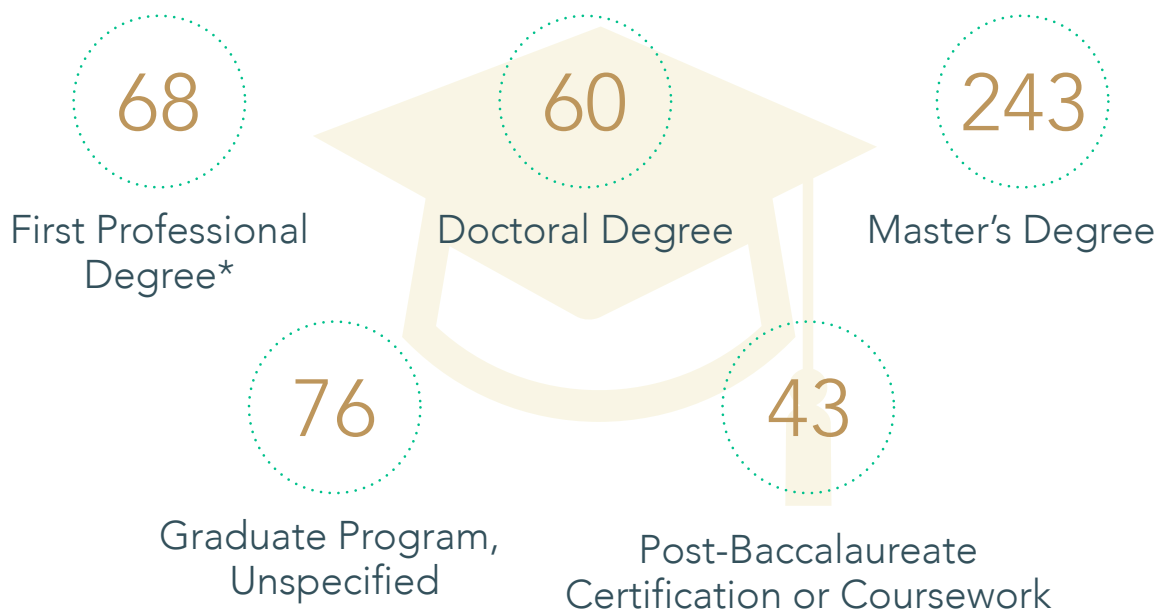


Top Graduate/Professional Schools

36% of the undergraduate Class of 2020 matriculated to 61 distinct graduate/professional programs. Those enrolling 4 or more students:



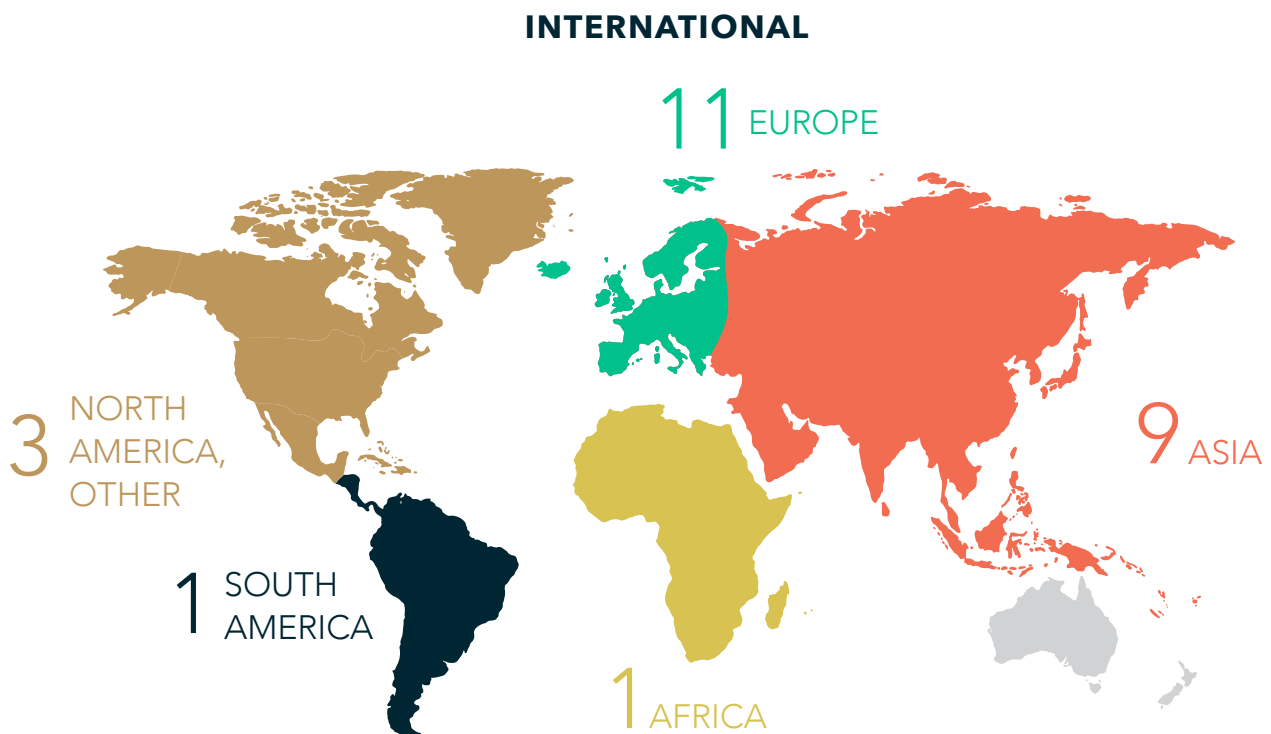
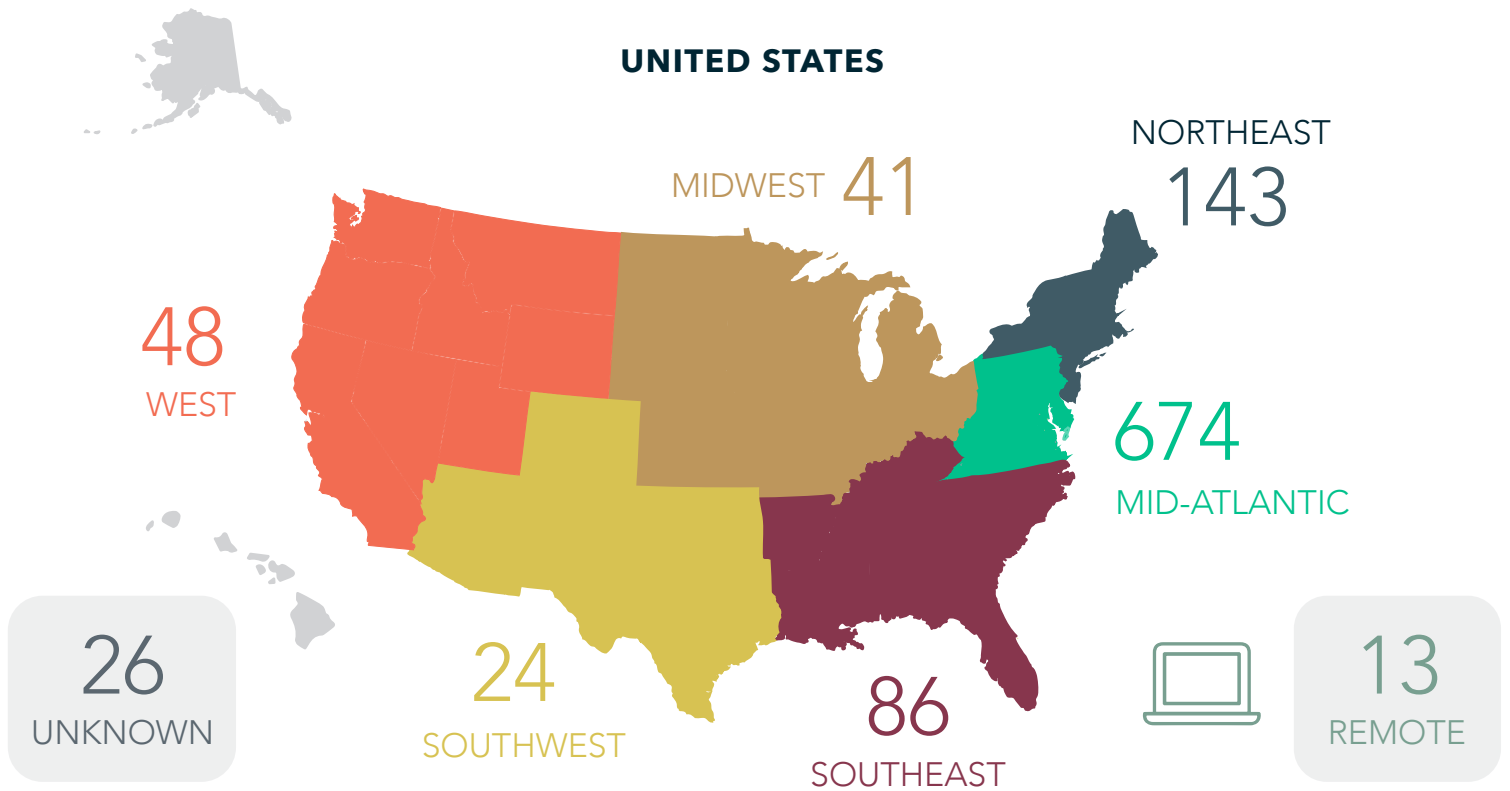
According to the *National Student Clearinghouse*, the *W&M Next Destination Survey*, and mined data, the following advanced degrees and certifications were sought by the Class of 2020.



* Includes law and medicine

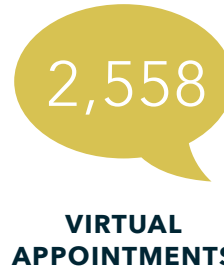
First Destination Geographic Distribution

*Geographic locations for employment and graduate/professional school were derived from NDS respondents, the National Student Clearinghouse, and mined data.



Student Engagement

One of the keys to successful career planning is an early start. The Cohen Career Center delivers programs and opportunities open to all class years, majors, and areas of interest. The graphic below illustrates the number of advising contacts from July 1, 2020 to June 30, 2021.



Funding for Unpaid Summer Experience (F.U.S.E.)*

13 students were funded for participation in unpaid summer internships, allowing them to gain valuable skills and work experience in a variety of industries. (Please note, F.U.S.E. is not intended to make up for lost wages, but to allow greater access to experiential learning.)



STUDENTS FUNDED 13

AWARDED MORE THAN \$29,000



*Students needs were greatly reduced due to sites shifting to virtual internships (COVID-19)

Externships & Career Chats

218 students participated in Externships and Career Chats which allowed them to network and gain exposure to industries of interest at 39 unique sites.



STUDENTS PARTICIPATED 218

SITES/ EMPLOYERS 39



Mock Interviews

48 unique students participated in practice interviews with career advisors, employers, alumni, and industry volunteers which included parents and community partners.



48
MOCK
INTERVIEWS

Big Interview

442 students used Big Interview -- a free, online interview preparation service for W&M students. Big Interview is paid for and provided by Cohen Career Center.



442
STUDENTS PREPARED

Programs

Programs are hosted year round by the Cohen Career Center and are designed to teach students about relevant topics such as resumes, cover letters, the job search, interviews, networking, graduate and professional school, and more.

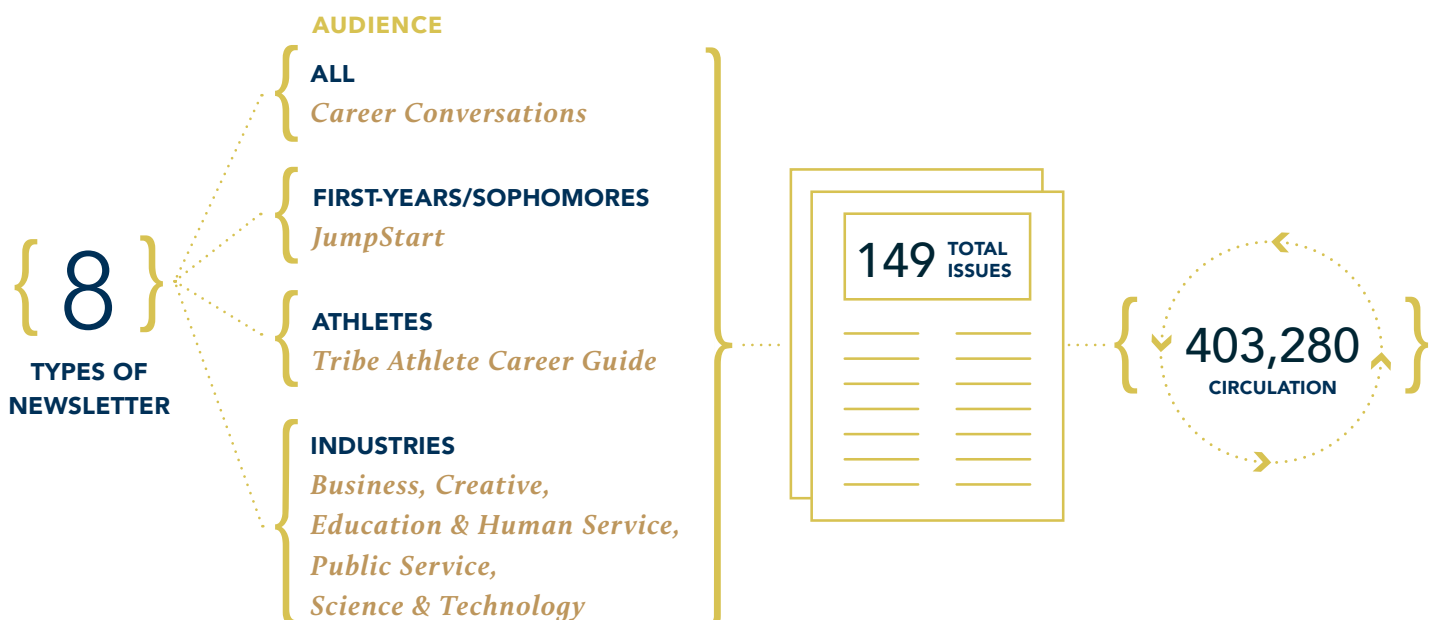
Programs include workshops, meet ups, crash courses, roundtable discussions, themed series, chats/talks, panels, virtual visits, seminars, and presentations.



4,308
STUDENT ATTENDEES

191
PROGRAMS

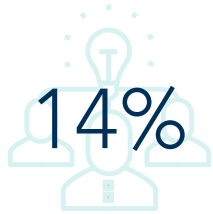
Cohen-Produced Newsletters



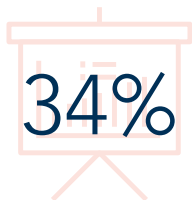
Students may subscribe and have access to all newsletters regardless of major, class year, or interest.

Experiential Learning

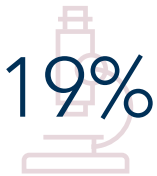
Experiential Learning by Academic Cluster



ARTS & HUMANITIES



BUSINESS

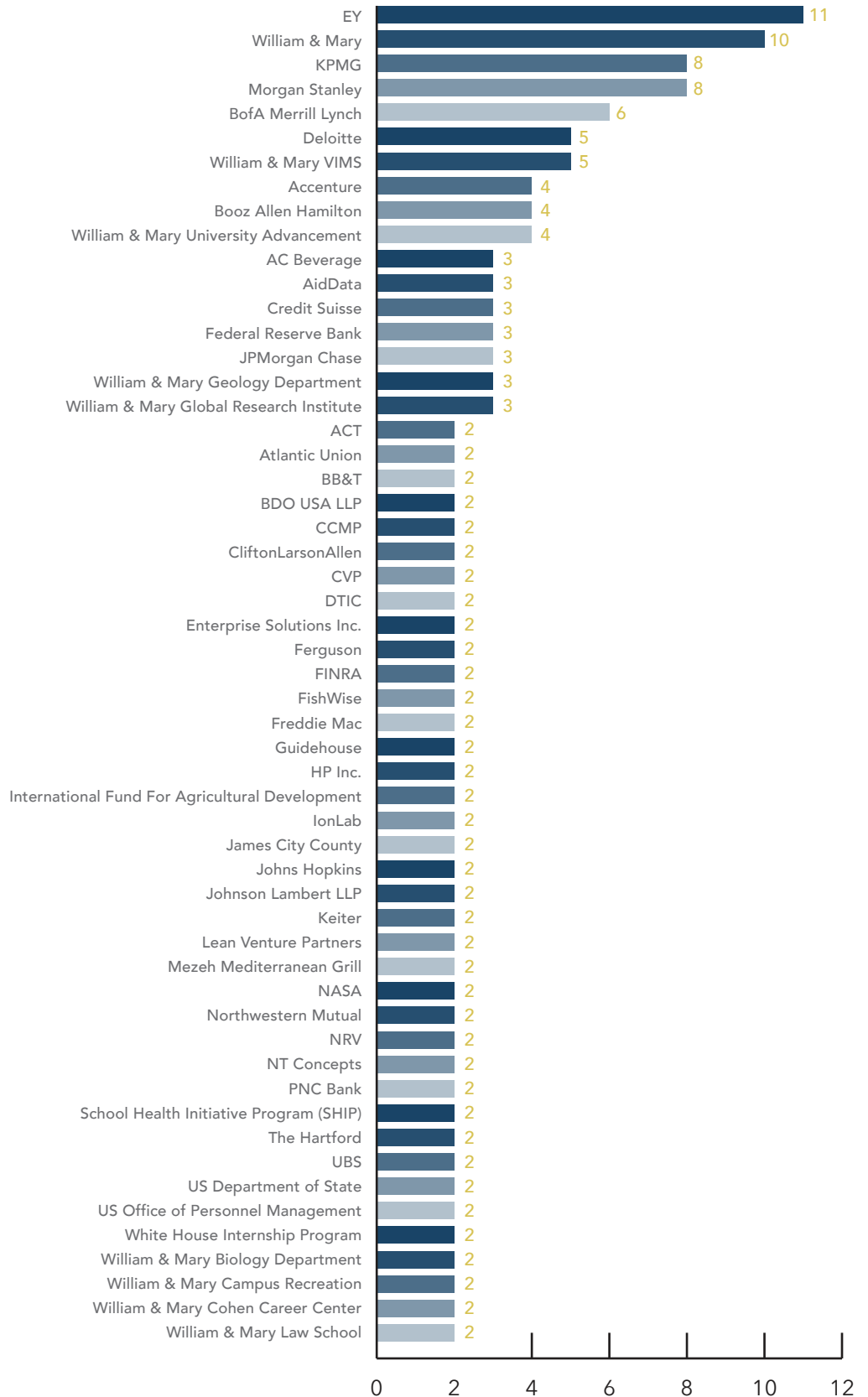


NATURAL SCIENCES & TECHNOLOGY

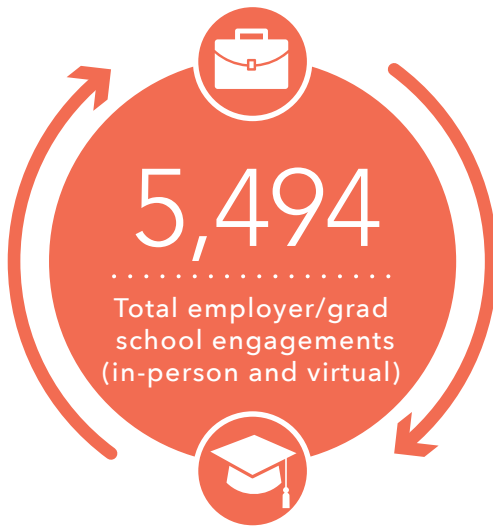


SOCIAL SCIENCES

In the Next Destination Survey, experiential learning was defined as applied research, internships, externships, field experience, and student employment in order to capture the most meaningful experiences reported by the Class of 2020. To the right are those sites with 2 or more responses from this cohort.



Recruiting Engagement



*Numbers represent all touchpoints between recruiters and students, not unique values. Total includes fairs, information sessions, interview days, OCR employers, externship sites, and employer mock interviews.

Annual Recruitment Events*



*Annual recruitment events were moved to virtual format due to the pandemic.

On-Campus Recruitment (OCR)*

Each fall and spring, employers set up interviews with W&M students for jobs and internships. All majors are recruited for a variety of industries.



**ON-CAMPUS
RECRUITING SCHEDULES** 40

**INTERVIEWS
CONDUCTED** 285



TribeCareers

TribeCareers is the hub for William & Mary students seeking opportunities. Our Employer Engagement team introduces our students to a wide variety of jobs, internships, fellowships, and other career experiences available throughout the Commonwealth, the nation, and the world.

4930

EMPLOYERS

13021

TOTAL POSTINGS*

5134

**STUDENT
APPLICATIONS**

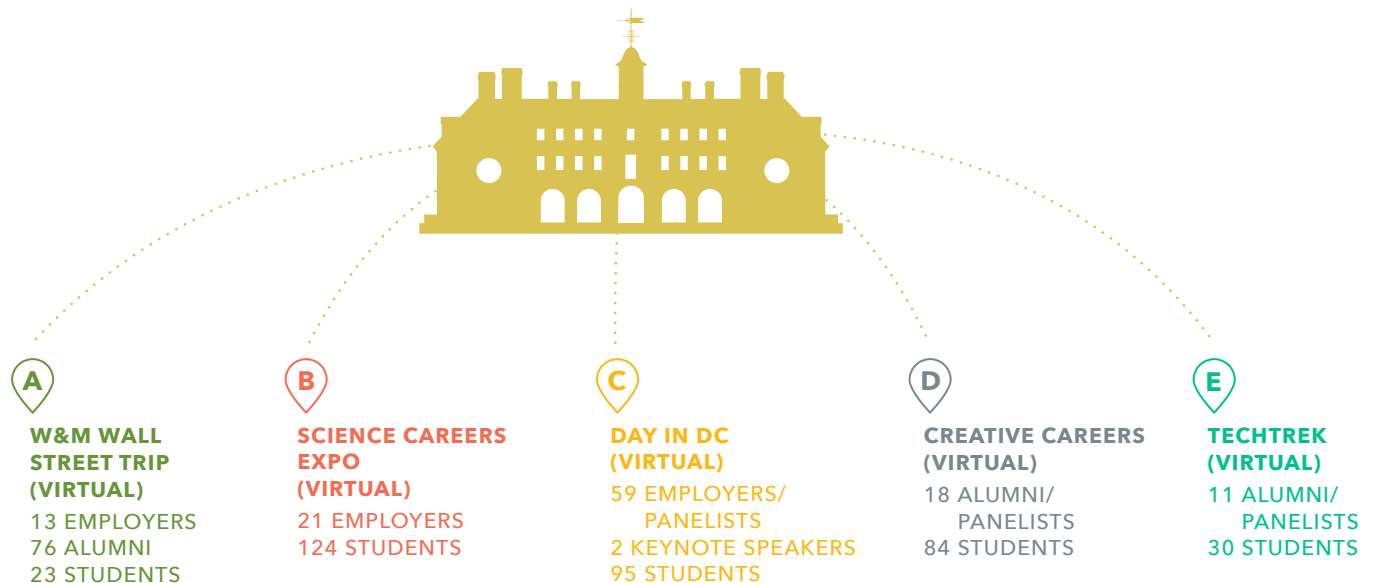
6666

**INTERSHIP
POSTINGS**

*Annual recruitment events were moved to virtual format due to the pandemic.

Signature Events*

Each year the Cohen Career Center hosts a number of trips where students from any academic background can attend site visits and gain in-depth industry exposure.



*Due to global pandemic, trips were moved to virtual format.

WILLIAM & MARY

Cohen Career Center
180 Stadium Drive
Williamsburg, VA 23185

career@wm.edu
www.wm.edu/career
757-221-3231

Facebook: /WMCareerCenter
Twitter: @wmcareer
Instagram: @cohencareercenter