

# Next Destination

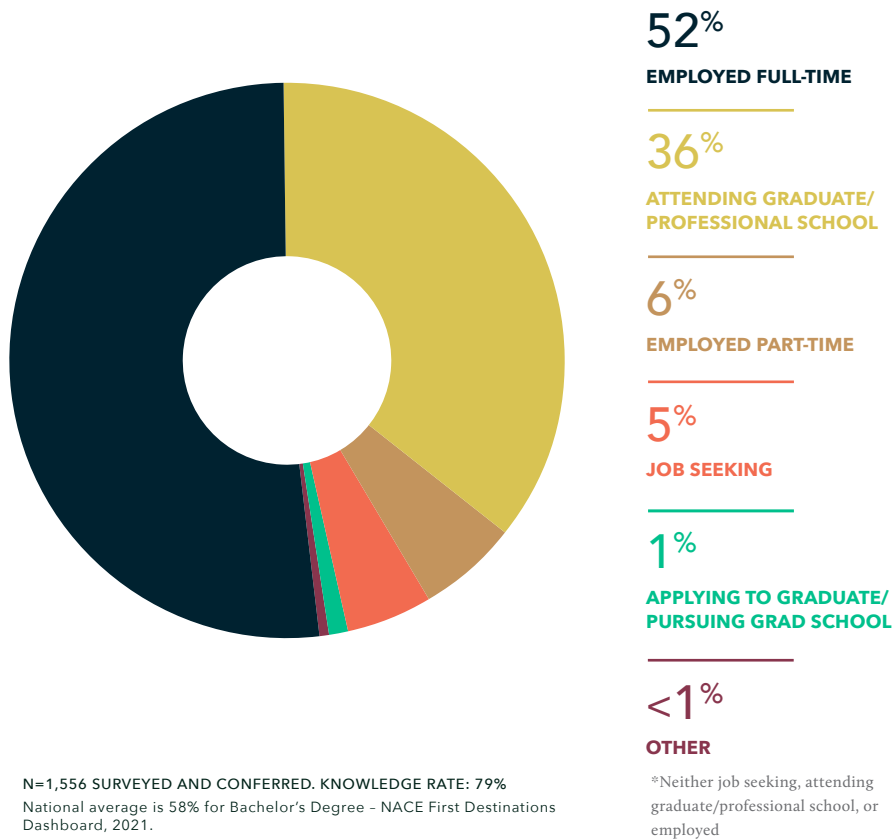
## CLASS OF 2021 UNDERGRADUATES

### NEXT DESTINATION REPORT

# Hire The TRIBE

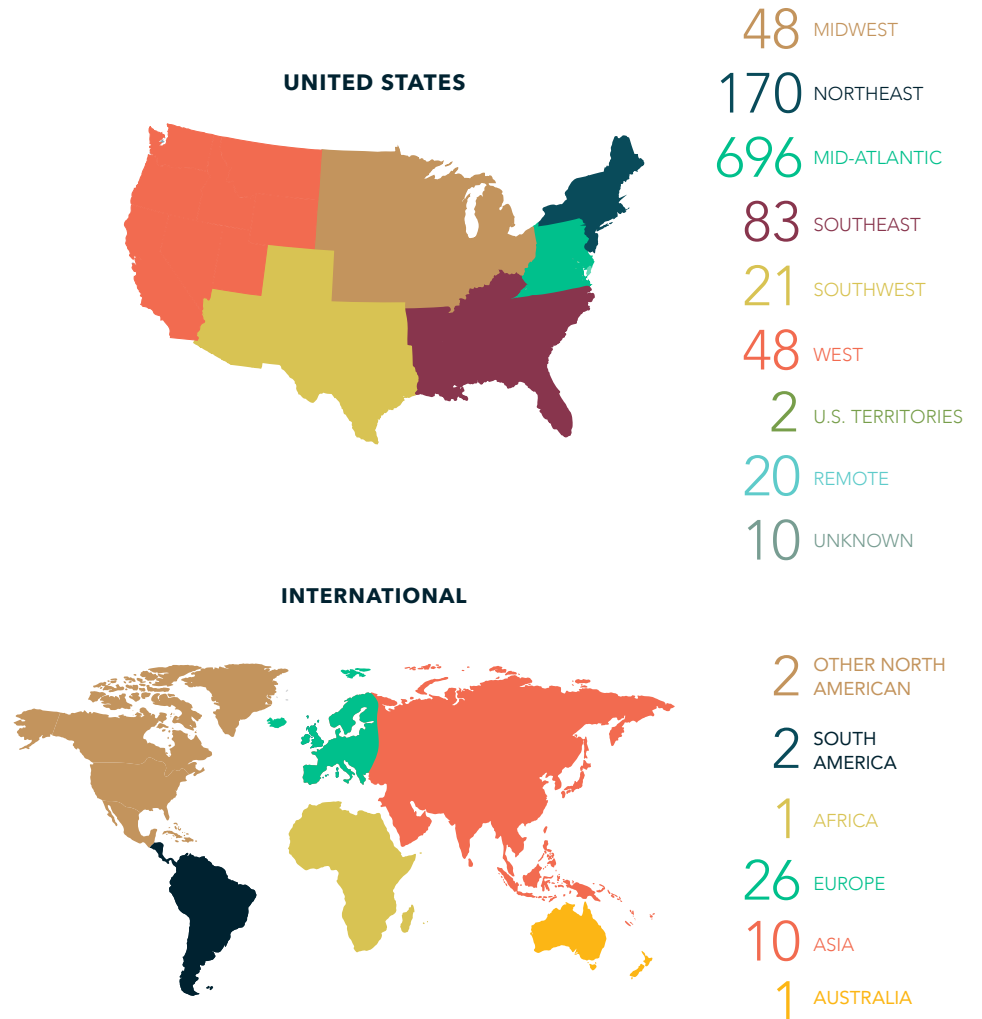
### CLASS OF 2021 NEXT DESTINATION REPORT

Within 6 months of graduation, the career outcomes rate – employed or attending graduate/professional school – was 93%. Of those employed, 97% reported alignment with their career interests.

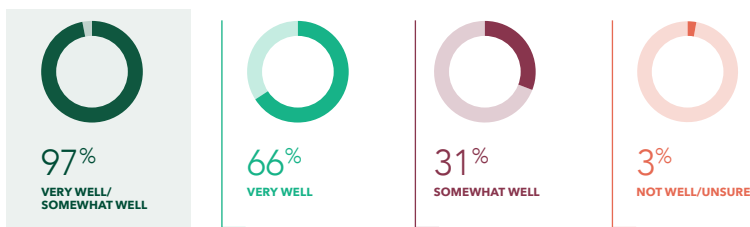


### NEXT DESTINATION GEOGRAPHIC DISTRIBUTION

Geographic locations for employment and graduate/professional school were derived from NDS respondents, the National Student Clearinghouse, and mined data.



### CAREER INTEREST ALIGNMENT



### TOP GRADUATE & PROFESSIONAL SCHOOLS

36% of the undergraduate Class of 2021 matriculated to 140 distinct graduate/professional institutions. Those enrolling 4 or more members of the Class of 2021:

American University	Indiana University - Bloomington	Shenandoah University	University of Pennsylvania
Boston University	James Madison University	Tufts University	University of Richmond
Carnegie Mellon University	Johns Hopkins University	University of California - Berkeley	University of South Carolina
Columbia University	Liberty University	University of California - Davis	University of St Andrews
Cornell University	Longwood University	University of Chicago	University of Virginia
Duke University	Michigan State University	University of Florida	Vanderbilt University
Eastern Virginia Medical School	Monmouth University	University of Illinois at Urbana-Champaign	Virginia Commonwealth University
Elon University	New York University	University of Maryland	Virginia Polytechnic Institute & State University
Emerson College	North Carolina State University	University of Massachusetts	Wake Forest University
George Mason University	Northwestern University	University of Michigan	Washington University in St. Louis
George Washington University	Old Dominion University	University of North Carolina at Chapel Hill	William & Mary
Georgetown University	Purdue University	University of Notre Dame	Yale University
Harvard University	Radford University		
	Seton Hall University		

### AVERAGE SALARIES

Reported by W&M Class of 2021

\$55,320

#### OVERALL FT MEAN SALARY

National Mean Salary for Bachelor Degrees: \$55,260  
(NACE Salary Survey, Summer 2022)

\$68,354

MEAN FT SALARY FOR BBA STUDENTS

\$52,341

MEAN FT SALARY FOR ARTS & SCIENCES STUDENTS

### INDUSTRIES

\$67,025

BUSINESS CAREERS

\$45,969

CREATIVE CAREERS

\$38,289

EDUCATION & HUMAN SERVICES CAREERS

\$33,120

PUBLIC SERVICE CAREERS

\$54,571

STEM CAREERS

\* To learn more about salaries based on occupational field and geographic location, visit the Occupational Outlook Handbook published by the Bureau of Labor Statistics at <https://www.bls.gov/ooh/>

### RANKINGS

#1 BEST SCHOOLS FOR INTERNSHIPS  
by Princeton Review

#13 BEST CAREER SERVICES  
by Princeton Review

### TOP EMPLOYERS

The undergraduate Class of 2021 reported 477 unique employers and 56 employers making multiple hires. Below are employers who hired 4 or more members of the Class of 2021:

Booz | Allen | Hamilton

accenture

amazon

AmeriCorps

CapitalOne

CGI

Deloitte.

EY

FreddieMac

Grant Thornton

JPMORGAN CHASE & CO.

KPMG

TEACH FOR AMERICA

U.S. ARMY

WILLIAM & MARY  
CHARTERED 1693

AIDDATA  
A Research Lab at William & Mary